

Water Dose Kit for EQp Vapor Abrasive Blast Systems

3A5128C

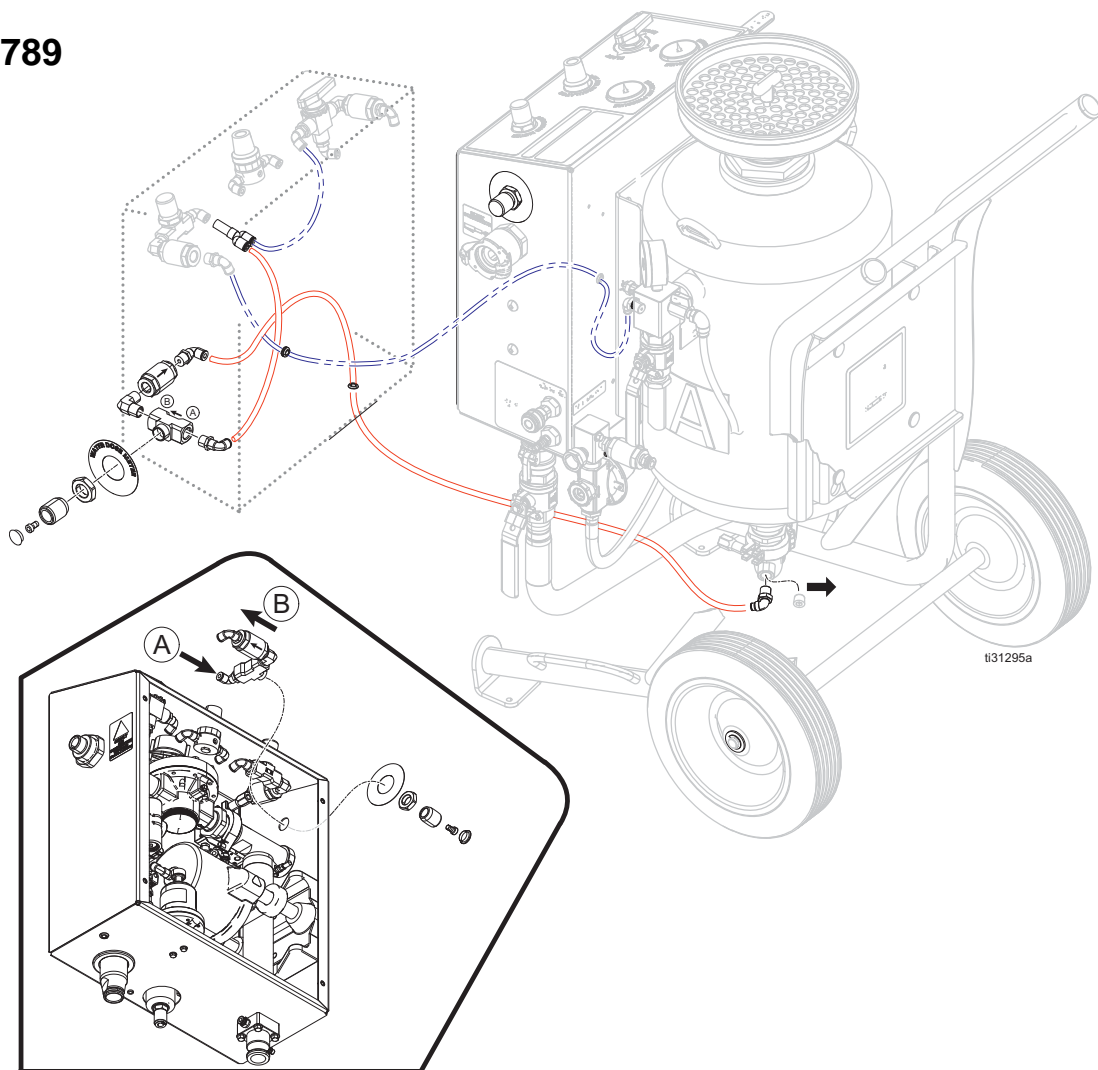
EN



Important Safety Instructions

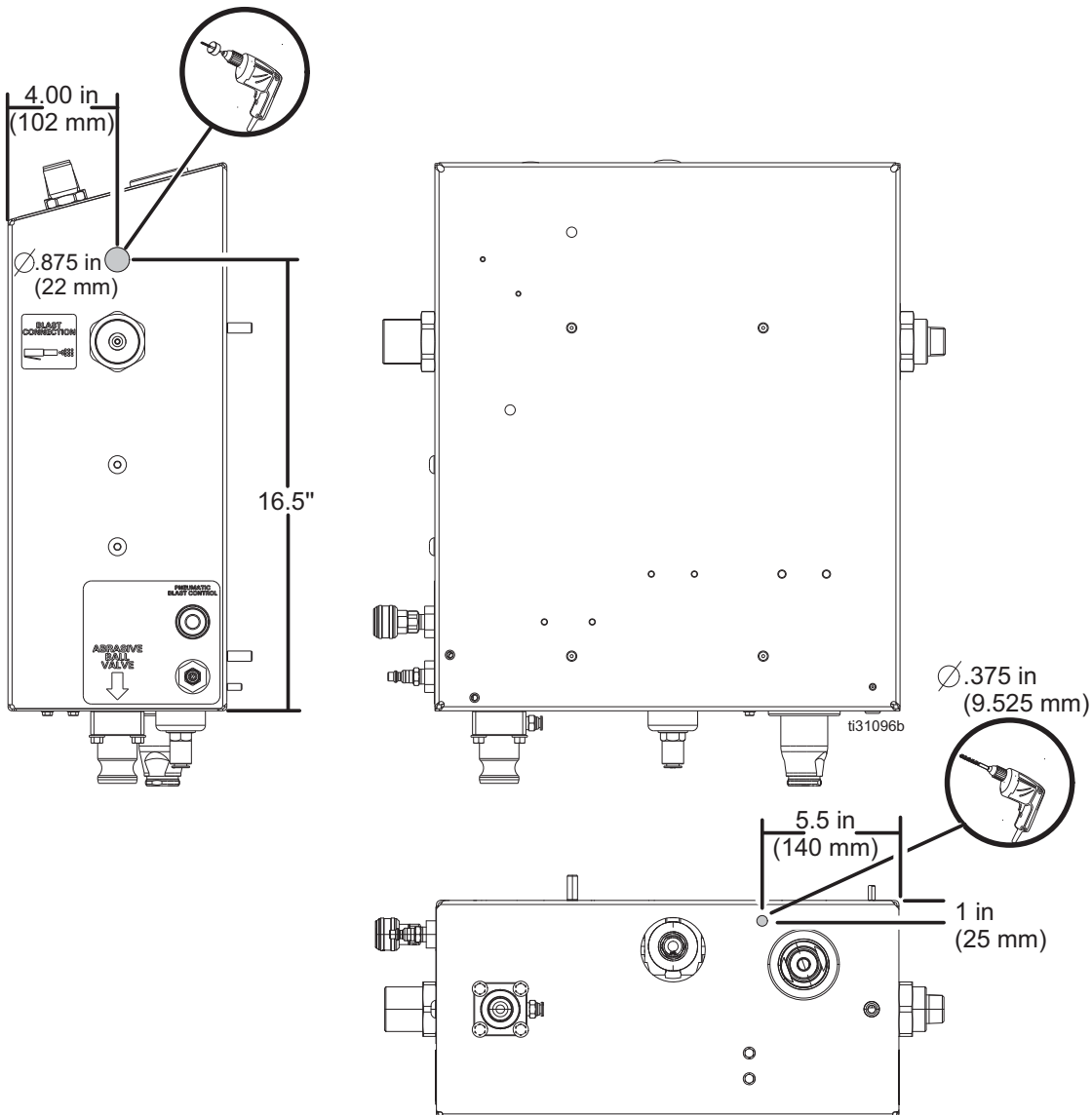
Read all warnings and instructions in this manual and in the EQp system manual. Save these instructions.

Kit 24Z789

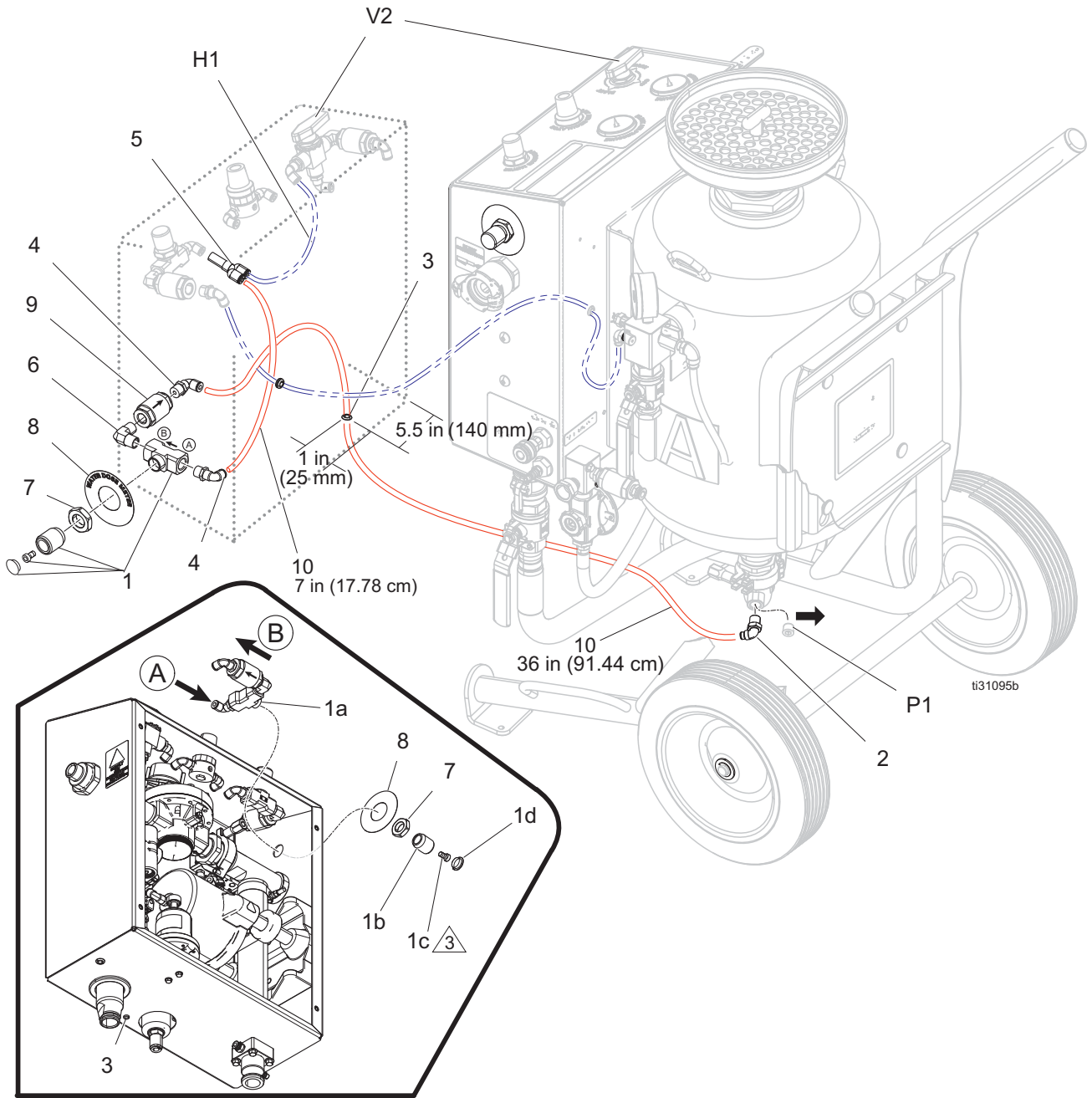


Installation

1. Perform the **Draining the Pot** procedure and **Pressure Relief Procedure** in the EcoQuip2 EQp system manual 3A4802.
2. Drill a new hole or remove and discard plug in enclosure at locations shown.
3. Install rubber grommets (3) into holes in enclosure.
4. Disconnect tubing (H1) and install Y fitting (5) into push-to-connect elbow on abrasive meter valve.
5. Assemble needle valve assembly as shown.
6. Install label (8) onto enclosure as shown on cover.
7. Remove cap (1d), screw (1c), and knob (1b) from needle valve (1a).
8. Insert needle valve assembly (1a) into enclosure wall.
9. Install nut (7), knob (1b), screw (1c) with adhesive (12), and cap (1d) on needle valve (1a) securing it to enclosure.
10. Install 1/4 inch tubing (10) (7 inches) into Y fitting (5) and needle valve port A push-to-connect elbow (4).
11. Remove plug (P1) and install push-to-connect swivel elbow (2) into unequal tee.
12. Install 1/4 inch tubing (10) (40 in.) into push-to-connect elbow (4), route through enclosure into push-to-connect elbow (2).



Parts



Ref.	Part	Description	Qty.	Ref.	Part	Description	Qty.
1	17K056	VALVE, needle, 3/8 NPT, brass	1	5	130081	FITTING, PTC, stem y, 1/4t	1
1a	---	VALVE, body	1	6	15Y239	FITTING, elbow, 3/8 x 3/8 male	1
1b	---	VALVE, knob	1	7	17H280	NUT, M20, needle valve	1
1c	---	VALVE, screw	1	8	17K156	LABEL, operations	1
1d	---	VALVE, cap	1	9	EQ1034	VALVE, check, 3/8 in., sst	1
2	127852	FITTING, elbow, swivel, push-to-conn	1	10	EQ1881	HOSE, tubing, 1/4 OD, natural	5
3	129090	GROMMET, 9/32 in. ID, rubber, black	1	11	110110	SEALANT, pipe, sst	1
4	129569	FITTING, PTC, elbow, 3/8 mpt, 1/4 t	2	12	113500	ADHESIVE, anaerobic	1

Graco Information

For the latest information about Graco products, visit www.graco.com.

For patent information, see www.graco.com/patents.

TO PLACE AN ORDER, contact your Graco distributor or call to identify the nearest distributor.

Phone: 612-623-6921 or Toll Free: 1-800-328-0211 Fax: 612-378-3505

*All written and visual data contained in this document reflects the latest product information available at the time of publication.
Graco reserves the right to make changes at any time without notice.*

Original instructions. This manual contains English. MM 3A5128

Graco Headquarters: Minneapolis

International Offices: Belgium, China, Japan, Korea

GRACO INC. AND SUBSIDIARIES • P.O. BOX 1441 • MINNEAPOLIS MN 55440-1441 • USA
Copyright 2018, Graco Inc. All Graco manufacturing locations are registered to ISO 9001.

www.graco.com
Revision C, February 2018