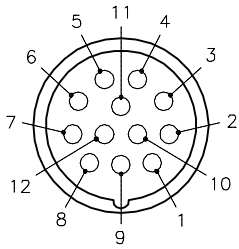
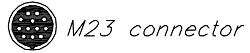


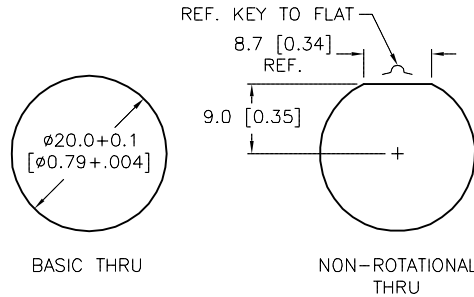
FEMALE END VIEW



- 1 = WHITE/BLACK
- 2 = BLACK/WHITE
- 3 = WHITE/GREEN
- 4 = GREEN/WHITE
- 5 = WHITE/RED
- 6 = RED/WHITE
- 7 = WHITE/ORANGE
- 8 = ORANGE/WHITE
- 9 = N/C
- 10 = N/C
- 11 = GRAY
- 12 = GREEN/YELLOW

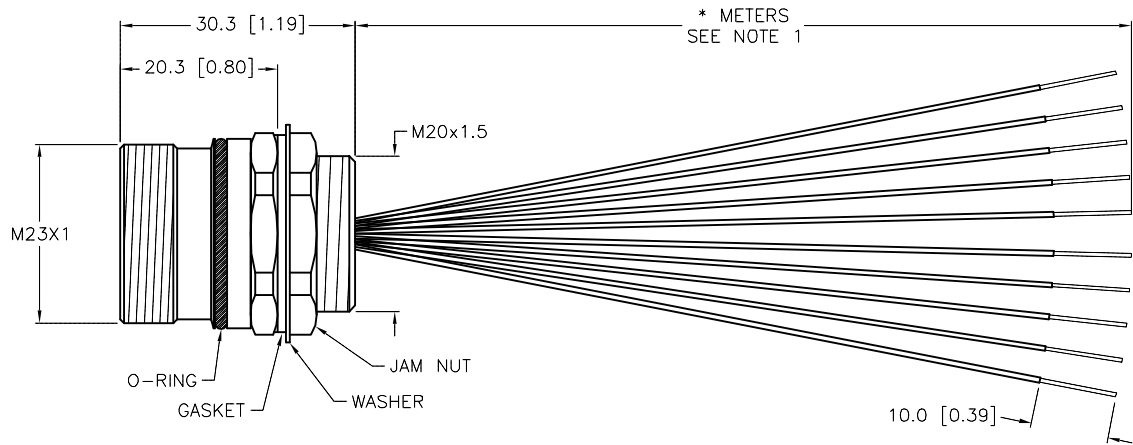
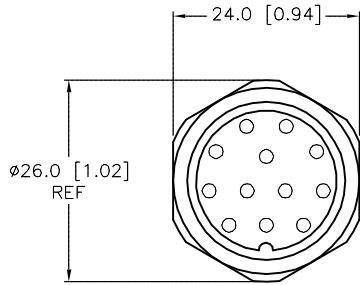


PANEL CUTOUT (TYPICAL)



SPECIFICATIONS

| | |
|----------------------------------|-----------------------------------|
| CONTACT CARRIER MATERIAL | NYLON or PBT |
| CONTACT MATERIAL/PLATING | BRASS/GOLD |
| HOUSING/LOCKNUT MATERIAL/PLATING | BRASS/NICKEL |
| O-RING/GASKET MATERIAL | RUBBER (NBR or FPM) |
| RATED CURRENT [A] | 3.0 A |
| RATED VOLTAGE [V] | 300 V |
| CONDUCTOR INSULATION MATERIAL | PVC |
| NUMBER OF CONDUCTORS [AWG] | 9x22 AWG, 1x18 AWG (DRAIN) |
| TEMPERATURE RANGE | -40°C to +105°C (-40°F to +221°F) |
| PROTECTION CLASS | MEETS IEC IP67 |
| MAXIMUM PANEL THICKNESS | 3.5 [0.138] |



| CABLE LENGTH | TOLERANCE* |
|--------------|---|
| ALL LENGTHS | + 4% (OR 50mm) OF LENGTH - 0% (OR 0mm) OF LENGTH WHICHEVER IS GREATER |
| STRIP LENGTH | TOLERANCE* |
| 0-7mm | ±0.5mm |
| 8-29mm | ±1.0mm |
| 30-49mm | ±2.0mm |
| 50-69mm | ±3.0mm |
| 70-100mm | ±4.0mm |
| OVER 100mm | ±5.0mm |

* UNLESS OTHERWISE SPECIFIED

SOURCE DRAWING - FOR REFERENCE ONLY

NOTES:
1. "*" INDICATES LEAD LENGTH IN METERS. CONTACT TURCK TO ORDER SPECIFIC LENGTHS.

| | | | | | |
|---|---|--|-------------|--|---------------|
| RELATED DOCUMENTS 1. 2. 3. 4. | 3RD ANGLE PROJECTION | THIS DRAWING IS CONFIDENTIAL AND THE PROPERTY OF TURCK INC. USE OF THIS DOCUMENT WITHOUT WRITTEN PERMISSION IS PROHIBITED. | | TURCK INC High Technology Sensors and Automation Controls 3000 CAMPUS DRIVE MINNEAPOLIS, MN 55441 1-800-544-7769 (763) 553-7300 (763) 553-0708 fax turck.com | |
| | | DRFT | JB | | DATE 12/05/02 |
| MATERIAL SEE SPECIFICATIONS | ALL DIMENSIONS DISPLAYED ON THIS DRAWING ARE FOR REFERENCE ONLY | APVD | SCALE 1=1.0 | IDENTIFICATION NO. | REV D |
| FINISH SEE SPECIFICATIONS | | UNIT OF MEASUREMENT MILLIMETER [INCH] | | | |
| DO NOT SCALE THIS DRAWING | | SHEET 1 OF 1 | | | |

| | | | | |
|-----|--|-----|----------|---------|
| D | DRAWING PROCESSED AS PART OF ECO 39948 | KMY | 09/18/12 | 39948 |
| REV | DESCRIPTION | BY | DATE | ECO NO. |