



Maximize your up-time with Graco

Divider Valve Accessories

Protect Your Equipment

A complete range of products to give you the information you need to ensure your machine is functioning at peak performance with the right amount of lubrication.



Contact us today!

Send an E-mail to info_APLube@graco.com for product information or visit us at www.graco.com

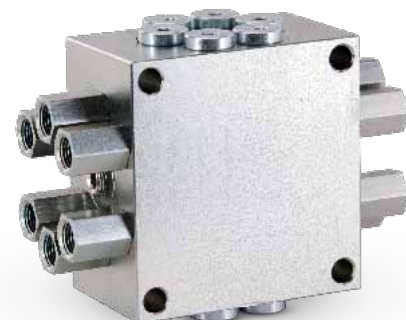


High temperature (350°F, 176°C) and synthetic lubricants are considered standard with Graco divider valves.

Less downtime with Graco automatic lubrication solutions

Help keep your equipment running at peak performance

Graco's series progressive systems give you the most advanced centralized lubrication—providing the best metering and accessory options available to help protect your investment.



ABOUT GRACO

Founded in 1926, Graco is a world leader in fluid handling systems and components. Graco products move, measure, control, dispense and apply a wide range of fluids and viscous materials used in vehicle lubrication, commercial and industrial settings.

The company's success is based on its unwavering commitment to technical excellence, world-class manufacturing and unparalleled customer service. Working closely with qualified distributors, Graco offers systems, products and technology that set the quality standard in a wide range of fluid handling solutions. Graco provides equipment for spray finishing, protective coating, paint circulation, lubrication, and dispensing sealants and adhesives, along with power application equipment for the contractor industry. Graco's ongoing investment in fluid management and control will continue to provide innovative solutions to a diverse global market.

GRACO LOCATIONS

MAILING ADDRESS

P.O. Box 1441
Minneapolis, MN 55440-1441
Tel: 612-623-6000
Fax: 612-623-6777

AMERICAS

MINNESOTA
Worldwide Headquarters
Graco Inc.
88-11th Avenue N.E.
Minneapolis, MN 55413

EUROPE

BELGIUM
European Headquarters
Graco N.V.
Industrieterrein-Oude Bunders
Slakweidestraat 31
3630 Maasmechelen,
Belgium
Tel: 32 89 770 700
Fax: 32 89 770 777

ASIA PACIFIC

AUSTRALIA

Graco Australia Pty Ltd.
Suite 17, 2 Enterprise Drive
Bundoora, Victoria 3083
Australia
Tel: 61 3 9468 8500
Fax: 61 3 9468 8599

CHINA

Graco (Hong Kong) Ltd.
Shanghai Representative Office
Building 7, 1029 Zhongshan
Road South
Huangpu District, Shanghai
200011, P.R.China
Tel: 86 21 649 50088
Fax: 86 21 649 50077

INDIA

Graco Hong Kong Ltd.
India Liaison Office
Room 443, Augusta Point
Regus Business Centre 53
Golf Course Road
Gurgaon, Haryana
India 122001
Tel: 91 124 435 4208
Fax: 91 124 435 4001

JAPAN

Graco K.K.
1-27-12 Hayabuchi
Tsuzuki-ku
Yokohama City, Japan 2240025
Tel: 81 45 593 7300
Fax: 81 45 593 7301

KOREA

Graco Korea Inc.
Shinhan Bank Building
4th Floor #1599
Gwanyang-Dong, Dongan-Ku,
Anyang-si, Korea 431-060
Tel: 82 31 476 9400
Fax: 82 31 476 9801

SALES/ DISTRIBUTION/ SERVICE

Contact us today!

Send an E-mail to info_APLube@graco.com for product information or visit us at www.graco.com

©2011 Graco Inc. 340800 Rev. A 05/2011 Printed in China. All written and visual data contained in this document are based on the latest product information available at the time of publication. Graco reserves the right to make changes at any time without notice. All other brand names or marks are used for identification purposes and are trademarks of their respective owners.

Series Progressive Divider Valves

Durable and Dependable Lubrication Metering Systems



Graco Engineered.

Trabon® USP—Uniblock Series Progressive



NEW
Addition to
the Trabon®
Series

Trabon USP is an economical option to solving your lubrication system needs. It serves as a high quality entry point to move away from manual lubrication, and is smaller than competitive mono blocks to save valuable machine space.

Features

- Series progressive metering in a one piece block—no assembly required!
- Space efficient design with 6, 8, 10, 12, 14, or 16 outlets. Outlets can be combined to meet larger bearing needs
- Requires no special fittings, all fittings come with the valve block
- Built-in outlet check valves ensure accurate lube delivery, every time
- Works with standard MSP magnetic and electronic proximity switch cycle indicators to provide positive assurance of a successful lube event

Typical Application

Mobile, industrial, food & beverage, wind, and many more

Trabon® MD Series

The Trabon MD Series is the most compact series progressive solution making it a perfect fit for tight spaced applications.

Features

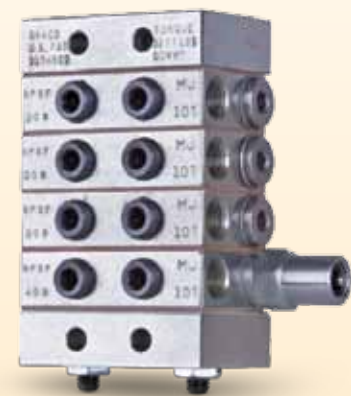
- Available with 2, 3, 4, or 6 outlets
- Easy to install on new or existing equipment
- Use our cycle indicator pin models to provide positive assurance of a successful lube event

Typical Application

Industrial or mobile applications where space is at a premium



Trabon® MJ Series



The Trabon MJ series features a compact and easily customizable design that can be tailor fit to meet a variety of specific lube requirements. Capable of handling grease grades up to NLGI #1.

Features

- Space efficient—from 6 to 16 points from one block assembly
- Built-in outlet check valves ensure accurate lube delivery, every time
- Alternate outlet on face of valves can be fitted with optional performance indicators, taking the guesswork out of troubleshooting
- Can be easily accessorized with magnetic and electronic proximity switch cycle indicators to provide positive assurance of a successful lube event

Typical Application

Machine tools, textile, glass & can machinery, & mobile equipment

Graco Machined.

Trabon® MSP Series



*Pre-Assembled
and Tested
Base Plates
Now Available!*

The Trabon MSP Series sets the industry standard for quality, reliability, and ease of use features. It was the original modular-style series progressive divider valve – and is still the best!

Features

- Quick change valve sections can be removed from the base assembly without disturbing any lube lines – minimizing labor cost and maximizing your machine uptime
- Can be easily accessorized with magnetic and electronic proximity switch cycle indicators to provide positive assurance of a successful lube event
- Alternate outlet on face of valves can be fitted with optional performance indicators, taking the guesswork out of troubleshooting
- Built-in outlet check valves ensure accurate lube delivery, every time

Typical Application

Mobile, industrial, food & beverage, wind, and many more

Manzel® MHH Series

Same capable design as the Trabon MSP Series, with even tighter and more exacting tolerances. The Manzel MHH Series delivers highly accurate lube delivery for demanding high pressure oil applications.

Features

- Quick change valve sections can be removed from the base assembly without disturbing any lube lines – minimizing labor cost and maximizing your machine uptime
- Can be easily accessorized with magnetic and electronic proximity switch cycle indicators to provide positive assurance of a successful lube event
- Alternate outlet on face of valves can be fitted with optional performance indicators, taking the guesswork out of troubleshooting
- Built-in outlet check valves ensure accurate lube delivery, every time

Typical Application

Compressors, industrial equipment, textile and mobile equipment



*Pre-Assembled
and Tested
Base Plates
Now Available!*

Trabon® MX Series



Greater output volumes for heavy service requirements make the Trabon MX Series ideal for steel and paper mill systems with it's economical and compact design.

Features

- Durable design withstands harsh environments and operating conditions
- Built-in outlet check valves ensure accurate lube delivery, every time
- Can be easily accessorized with magnetic and electronic proximity switch cycle indicators to provide positive assurance of a successful lube event
- Alternate outlet on face of valves can be fitted with optional performance indicators, taking the guesswork out of troubleshooting

Typical Application

Pulp and paper, steel mills, heavy and high volume industrial applications

Graco Assembled.

Trabon® MXP Series



The Trabon MXP Series' greater output volume makes it easy to customize your assembly to meet larger machine requirements.

Features

- Quick change valve sections can be removed from the base assembly without disturbing any lube lines – minimizing labor cost and maximizing your machine uptime
- Can be easily accessorized with magnetic and electronic proximity switch cycle indicators to provide positive assurance of a successful lube event
- Alternate outlet on face of valves can be fitted with optional performance indicators, taking the guesswork out of troubleshooting
- Built-in outlet check valves ensure accurate lube delivery, every time

Typical Application

Pulp and paper, steel mills, heavy and high volume industrial applications

Trabon® MGO Series

The Trabon MGO Series offers the largest output available in a series progressive system. Ideal for heavy duty and large bearing applications with wide temperature variations and high volume requirements.

Features

- Can be easily accessorized with magnetic and electronic proximity switch cycle indicators to provide positive assurance of a successful lube event
- Alternate outlet on face of valves can be fitted with optional performance indicators, taking the guesswork out of troubleshooting
- Robust design is virtually indestructible and built to perform in extreme environments

Typical Application

Pulp and paper, steel mills, heavy and high volume industrial applications



Technical Specifications <small>Divider valves can be used with oil or grease grades up to NLGI #2 (MJ valves up to NLGI #1)</small>				
Trabon USP Series	Maximum Pressure, psi (bar)	Output Twin Outlet, in³ (cm³)	Output Single Outlet, in³ (cm³)	Cycle Indication
USP6	5,076 (350)	-	0.012 (0.20)	Electronic proximity switch, magnetic visual indicator
USP8	5,076 (350)	-	0.012 (0.20)	
USP10	5,076 (350)	-	0.012 (0.20)	
USP12	5,076 (350)	-	0.012 (0.20)	
USP14	5,076 (350)	-	0.012 (0.20)	
USP16	5,076 (350)	-	0.012 (0.20)	
Trabon MD Series	Maximum Pressure, psi (bar)	Output Twin Outlet, in³ (cm³)	Output Single Outlet, in³ (cm³)	Cycle Indication
MD-2	3,000 (207)	-	0.04 (0.66)	Cycle indicator switch
MD-3	3,000 (207)	-	Outlet 1 - 0.04 (0.66) Outlet 2 & 3 - 0.02 (0.33)	
MD-4	3,000 (207)	-	0.02 (0.33)	
MD-6	3,000 (207)	-	0.01 (0.16)	

Graco Quality.

Trabon MJ Series	Maximum Pressure, psi (bar)	Output Twin Outlet, in³ (cm³)	Output Single Outlet, in³ (cm³)	Cycle Indication
MJ5	2,000 (138)	0.005 (0.08)	0.010 (0.16)	Not available
MJ10	2,000 (138)	0.010 (0.16)	0.020 (0.33)	Cycle indicator switch
MJ15	2,000 (138)	0.015 (0.26)	0.030 (0.49)	
Trabon MSP Series	Maximum Pressure, psi (bar)	Output Twin Outlet, in³ (cm³)	Output Single Outlet, in³ (cm³)	
MSP5	3,500 (241)	0.005 (0.08)	0.010 (0.16)	Electronic proximity switch, magnetic visual indicator
MSP10	3,500 (241)	0.010 (0.16)	0.020 (0.33)	
MSP15	3,500 (241)	0.015 (0.26)	0.030 (0.49)	
MSP20	3,500 (241)	0.020 (0.33)	0.040 (0.66)	
MSP25	3,500 (241)	0.025 (0.41)	0.050 (0.82)	Electronic proximity switch, magnetic visual indicator, cycle indicator switch
MSP30	3,500 (241)	0.030 (0.49)	0.060 (0.98)	
MSP35	3,500 (241)	0.035 (0.57)	0.070 (1.15)	
MSP40	3,500 (241)	0.040 (0.66)	0.080 (1.31)	
Trabon MHH Series	Maximum Pressure, psi (bar)	Output Twin Outlet, in³ (cm³)	Output Single Outlet, in³ (cm³)	
MHH6	7,500 (517)	0.006 (0.098)	0.012 (0.197)	Electronic proximity switch, magnetic visual indicator
MHH9	7,500 (517)	0.009 (0.149)	0.018 (0.295)	
MHH12	7,500 (517)	0.012 (0.197)	0.024 (0.393)	
MHH18	7,500 (517)	0.018 (0.295)	0.036 (0.590)	Electronic proximity switch, magnetic visual indicator, cycle indicator switch
MHH24	7,500 (517)	0.024 (0.393)	0.048 (0.787)	
MHH30	7,500 (517)	0.030 (0.492)	0.060 (0.983)	
Trabon MX Series	Maximum Pressure, psi (bar)	Output Twin Outlet, in³ (cm³)	Output Single Outlet, in³ (cm³)	
MX25	3,000 (207)	0.025 (0.41)	0.050 (0.82)	Electronic proximity switch
MX50	3,000 (207)	0.050 (0.82)	0.100 (1.64)	Electronic proximity switch, cycle indicator switch
MX75	3,000 (207)	0.075 (1.23)	0.150 (2.46)	
MX100	3,000 (207)	0.100 (1.64)	0.200 (3.28)	
MX125	3,000 (207)	0.125 (2.05)	0.250 (4.10)	
MX150	3,000 (207)	0.150 (2.46)	0.300 (4.92)	
Trabon MXP Series	Maximum Pressure, psi (bar)	Output Twin Outlet, in³ (cm³)	Output Single Outlet, in³ (cm³)	Cycle Indication
MXP25	3,000 (207)	0.025 (0.41)	0.050 (0.82)	Electronic proximity switch
MXP50	3,000 (207)	0.050 (0.82)	0.100 (1.64)	Electronic proximity switch, cycle indicator switch
MXP75	3,000 (207)	0.075 (1.23)	0.150 (2.46)	
MXP100	3,000 (207)	0.100 (1.64)	0.200 (3.28)	
MXP125	3,000 (207)	0.125 (2.05)	0.250 (4.10)	
MXP150	3,000 (207)	0.150 (2.46)	0.300 (4.92)	
Trabon MGO Series	Maximum Pressure, psi (bar)	Output Twin Outlet, in³ (cm³)	Output Single Outlet, in³ (cm³)	Cycle Indication
MGO150	Up to 6,000 (413)	0.150 (2.46)	0.300 (4.92)	Electronic proximity switch, cycle indicator switch
MGO300	Up to 6,000 (413)	0.300 (4.92)	0.600 (9.83)	
MGO450	Up to 6,000 (413)	0.450 (7.37)	0.900 (14.7)	
MGO600	Up to 6,000 (413)	0.600 (9.83)	1.200 (19.7)	