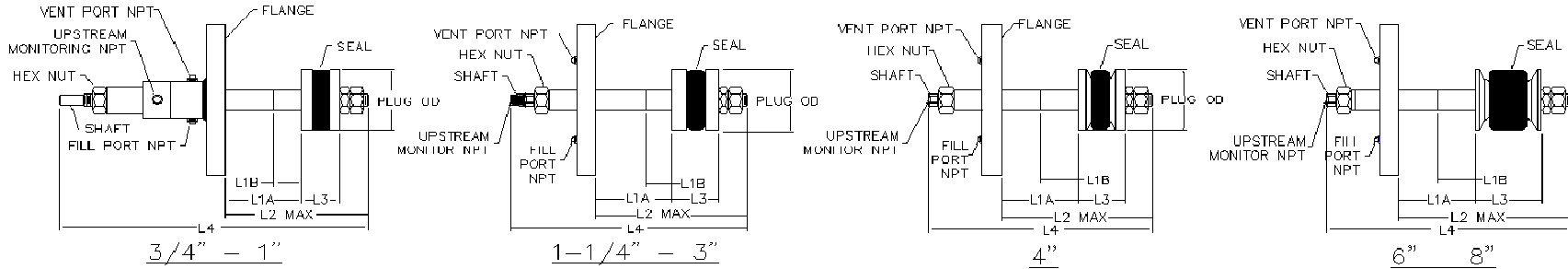


HIGH LIFT FLANGE TP/WP (3/4"-8") TECHNICAL SPECIFICATIONS



FLANGE SIZE	ANSI FLANGE CLASS	PIPE SCHEDULE	PART NUMBER	PLUG OD		SEAL TO PIPE CLEARANCE		SHAFT OD		SHAFT ID		VENT & FILL PORT SIZE	UPSTREAM MONITOR SIZE	L1A WELDING PLUG		L1B TEST PLUG		L2 MAX		L3		L4		SHAFT HEX WRENCH SIZE	HEX NUT WRENCH SIZE	ESTIMATED SHIPPING WEIGHT 150 LB		ESTIMATED SHIPPING WEIGHT 300 LB		ESTIMATED SHIPPING WEIGHT 600 LB	
				(in)	(mm)	(in)	(mm)	(in)	(mm)	(in)	(mm)			(in)	(mm)	(in)	(mm)	(in)	(mm)	(in)	(mm)	(in)	(mm)			(in)	(mm)	(in)	(mm)	(in)	(mm)
3/4" DN20	150 - 600	160	HLZ-075P160	.56	14.2	.05	1.3	3/8	9.5	3/16	4.8	1/8 F	1/8 F	12	304.8	3	76.2	14 1/4	362.0	1 1/4	31.8	24 11/16	627.1	n/a (4)	9/16	8	3.62	9	4.08	9	4.08
		80	HLZ-075P80	.67	17.0	.07	1.8																								
		40	HLZ-075P40	.75	19.1	.07	1.8																								
1" DN25	150 - 600	xxs	HLZ-1PXXS	.56	14.2	.04	1.0	3/8	9.5	3/16	4.8	1/8 F	1/8 F	12	304.8	3	76.2	14 1/4	362.0	1 1/4	31.8	24 11/16	627.1	n/a (4)	9/16	9	4.08	11	4.98	11	4.98
		160	HLZ-1P160	.71	18.0	.11	2.8																								
		80	HLZ-1P80	.85	21.6	.11	2.8																								
1-1/4" DN32	150 - 600	40	HLZ-1P40	.94	23.9	.11	2.8	5/8	15.9	5/16	7.9	1/8 F	1/4 M	12	304.8	3 3/8	85.7	15	381.0	1 5/8	41.3	20 3/8	517.5	1/2	15/16	10	4.53	13	5.89	13	5.89
		160	HLZ-125P160	1.03	26.2	.13	3.3																								
		80	HLZ-125P80	1.15	29.2	.13	3.3																								
1-1/2" DN40	150 - 600	40	HLZ-125P40	1.25	31.8	.13	3.3	5/8	15.9	5/16	7.9	1/4 F	1/4 M	12	304.8	3 3/8	85.7	15 1/8	384.2	1 3/4	44.5	20 3/8	517.5	1/2	15/16	11	4.98	15	6.80	16	7.25
		160	HLZ-15P160	1.17	29.7	.17	4.3																								
		80	HLZ-15P80	1.33	33.8	.17	4.3																								
2" DN50	150 - 600	40	HLZ-2P40	1.44	36.6	.17	4.3	5/8	15.9	5/16	7.9	1/4 F	1/4 M	12	304.8	3 3/8	85.7	15 1/8	384.2	1 3/4	44.5	20 3/8	517.5	1/2	15/16	14	6.34	18	8.16	20	9.06
		160	HLZ-2P160	1.44	36.6	.25	6.4																								
		80	HLZ-2P80	1.69	42.9	.25	6.4																								
2-1/2" DN65	150 - 600	40	HLZ-2P40	1.82	46.2	.25	6.4	1 1/4	31.8	1/2	12.7	1/4 F	3/8 F	12	304.8	6	152.4	17 1/8	435.0	2	50.8	22 3/8	568.3	7/8	2	20	9.06	25	11.33	28	12.69
		xxs	HLZ-3PXXS	2.07	52.6	.23	5.8																								
		160	HLZ-3P160	2.25	57.2	.38	9.7																								
3" DN80	150 - 600	80	HLZ-3P80	2.52	64.0	.38	9.7	1 1/4	31.8	1/2	12.7	3/4 F	3/8 F	12	304.8	6	152.4	17 1/8	435.0	2	50.8	22 3/8	568.3	7/8	2	26	11.78	33	14.95	37	16.76
		40	HLZ-3P40	2.69	68.3	.38	9.7																								
		xxs	HLZ-4PXXS	2.71	68.8	.44	11.2																								
4" DN100	150 - 600	160	HLZ-4P160	3.00	76.2	.44	11.2	1 1/4	31.8	1/2	12.7	3/4 F	3/8 F	12	304.8	6	152.4	17 1/8	435.0	2	50.8	22 3/8	568.3	7/8	2	32	14.50	43	19.48	56	25.37
		120	HLZ-4P120	3.19	81.0	.44	11.2																								
		80	HLZ-4P80	3.39	86.1	.44	11.2																								
6" DN150	150 - 600	40	HLZ-4P40	3.59	91.2	.44	11.2	2	50.8	3/4	19.1	3/4 F	3/4 F	12	304.8	6	152.4	20 1/2	520.7	3 3/4	95.3	28	711.2	1 5/8	3 1/8	70	31.72	91	41.23	129	58.45
		160	HLZ-6P160	4.69	119.1	.50	12.7																								
		120	HLZ-6P120	5.00	127.0	.50	12.7																								
8" DN200	150 - 600	80	HLZ-6P80	5.26	133.6	.50	12.7	2	50.8	3/4	19.1	3/4 F	3/4 F	12	304.8	6	152.4	20 3/4	527.1	4	101.6	28	711.2	1 5/8	3 1/8	146	66.15	178	80.65	238	107.84
		40	HLZ-8P40	5.57	141.5	.50	12.7																								
		xxs	HLZ-8PXXS	6.38	162.1	.50	12.7																								
		140	HLZ-8P140	6.50	165.1	.50	12.7																								
		120	HLZ-8P120	6.69	169.9	.50	12.7																								
		100	HLZ-8P100	6.94	176.3	.50	12.7																								
		80	HLZ-8P80	7.31	185.7	.50	12.7																								

Notes:
 (1) Standard Seal Material = Urethane
 (2) Standard Operating Pressures:
 Z = A = 150lb = 450 psi
 Z = B = 300lb = 1125 psi
 Z = D = 600lb = 1125 psi
 (3) Male NPT = M, Female NPT = F
 (4) 3/4"-1" has round section for use of pipe wrench

Questions? Contact EST Group Customer Service at any of the following locations.



EST Group

www.cw-estgroup.com

North, Central & South America
EST Group Corporate Office
 2701 Township Line Road
 Hatfield, PA 19440-1770 USA
 P: +1.215.721.1100
 +1.800.355.7044
 F: +1.215.721.1101

est-info@curtisswright.com

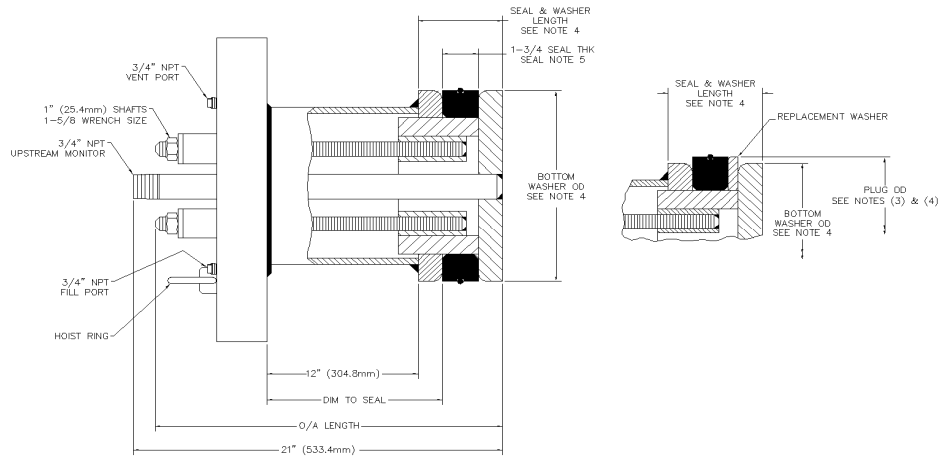
Europe / Middle East / Africa
EST Group B.V.
 Hoom 312a
 2404 HL Alphen aan den Rijn
 The Netherlands
 P: +31.172.418841
 F: +31.172.418849

est-emea@curtisswright.com

China
 P: +86.400.636.5077
est_china@curtisswright.cn

Singapore
 P: +65.3158.5052
est-asia@curtisswright.com
 © 2020 Curtiss-Wright

HIGH LIFT FLANGE TP/WP (10"-16") TECHNICAL SPECIFICATIONS



FLANGE SIZE	ANSI FLANGE CLASS (2)	PIPE SCHEDULE	PART NUMBER	BOTTOM WASHER OD (4)		PLUG OD (3) (4)		SHAFT QTY	DIM TO SEAL		O/A LENGTH		SEAL/WASHER LENGTH		SEAL O-RING DASH NO. (5)	ESTIMATED SHIPPING WEIGHT 150 LB		ESTIMATED SHIPPING WEIGHT 300 LB		ESTIMATED SHIPPING WEIGHT 600 LB										
				(in)	(mm)	(in)	(mm)		(in)	(mm)	(in)	(mm)	(in)	(mm)		(lbs)	(kg)	(lbs)	(kg)	(lbs)	(kg)									
10" DN250	150 - 600	sch 100 (4)	HLZ-10P100	8.81	223.8	8.81	223.8	4	12 1/2	317.5	20 11/16	525.5	3 1/2	88.9	-445	175	79.3	230	104.2	339	153.6									
		sch 80	HLZ-10P80			9.06	230.1						4	101.6	-446															
		sch 60xs	HLZ-10PXS			9.25	235.0						4	101.6	-446															
		sch 40/std	HLZ-10P40			9.52	241.8						4	101.6	-447															
		sch 30	HLZ-10P30			9.64	244.9						4	101.6	-447															
		sch 20	HLZ-10P20			9.75	247.7						4	101.6	-447															
		sch 10s	HLZ-10P10S			9.92	252.0						4	101.6	-448															
		sch 5	HLZ-10P5			9.98	253.5						4	101.6	-448															
		sch 80 (4)	HLZ-12P80			10.87	276.1						10.87	276.1	4							12 1/2	317.5	20 11/16	525.5	3 1/2	88.9	-449	212	96.1
sch 60	HLZ-12P60	11.13	282.7	4	101.6	-450																								
xs	HLZ-12PXS	11.25	285.8	4	101.6	-450																								
sch 40/std	HLZ-12P40	11.50	292.1	4	101.6	-451																								
sch 30	HLZ-12P30	11.59	294.4	4	101.6	-451																								
sch 20	HLZ-12P20	11.75	298.5	4	101.6	-451																								
sch 10s/5	HLZ-12P10S	11.94	303.3	4	101.6	-452																								
sch 140 (4)	HLZ-14P140	11.00	279.4	11.00	279.4	6	12 1/2	317.5	20 15/16	531.8	3 3/4	95.3	N/A	296		134.1	386	174.9	530	240.1										
sch 120	HLZ-14P120	11.31	287.3	4 3/8	111.1																									
sch 100	HLZ-14P100	11.62	295.1	4 3/8	111.1																									
sch 80	HLZ-14P80	12.00	304.8	4 3/8	111.1																									
sch 60	HLZ-14P60	12.31	312.7	4 3/8	111.1																									
xs	HLZ-14Pxs	12.50	317.5	4 3/8	111.1																									
sch 40	HLZ-14P40	12.62	320.5	4 3/8	111.1																									
sch 30/std	HLZ-14PSTD	12.75	323.9	4 3/8	111.1																									
sch 20	HLZ-14P20	12.88	327.2	4 3/8	111.1																									
sch 10/10s/5	HLZ-14P10	13.12	333.2	4 3/8	111.1																									
16" DN400	150 - 600	sch 120 (4)	HLZ-16P120	13.06	331.7	13.06	331.7	8	12 1/2	317.5	20 15/16	531.8	3 3/4	95.3	N/A	397	179.9	528	239.2	725	328.5									
		sch 100	HLZ-16P100	13.44	341.4	4 3/8	111.1																							
		sch 80	HLZ-16P80	13.81	350.8	4 3/8	111.1																							
		sch 60	HLZ-16P60	14.19	360.4	4 3/8	111.1																							
		sch 40xs	HLZ-16P40	14.50	368.3	4 3/8	111.1																							
		sch 30/std	HLZ-16PSTD	14.75	374.7	4 3/8	111.1																							
		sch 20	HLZ-16P20	14.88	378.0	4 3/8	111.1																							
		sch 10/10s/5	HLZ-16P10	15.12	384.0	4 3/8	111.1																							

- Notes:
- (1) Standard Seal Material = Urethane
 - (2) Standard Operating Pressure:
10"-24" = Z = A = 150lb = 450 psi
10"-24" = Z = B = 300lb = 1125 psi
10"-12" = Z = D = 600lb = 2250 psi
14"-24" = Z = D = 600lb = 1125 psi
 - (3) Seal to pipe clearance is approximately 1/2", clearance may be slightly smaller on plugs that accommodate more than one schedule size.
 - (4) Replacement washers are required on all schedule sizes except for the smallest one for each pipe size
 - (5) 10" & 12" Seals include an external o-ring

Questions? Contact EST Group Customer Service at any of the following locations.



EST Group

www.cw-estgroup.com

North, Central & South America
EST Group Corporate Office
 2701 Township Line Road
 Hatfield, PA 19440-1770 USA
 P: +1.215.721.1100
 +1.800.355.7044
 F: +1.215.721.1101

est-info@curtisswright.com

Europe / Middle East / Africa
EST Group B.V.
 Hoom 312a
 2404 HL Alphen aan den Rijn
 The Netherlands
 P: +31.172.418841
 F: +31.172.418849

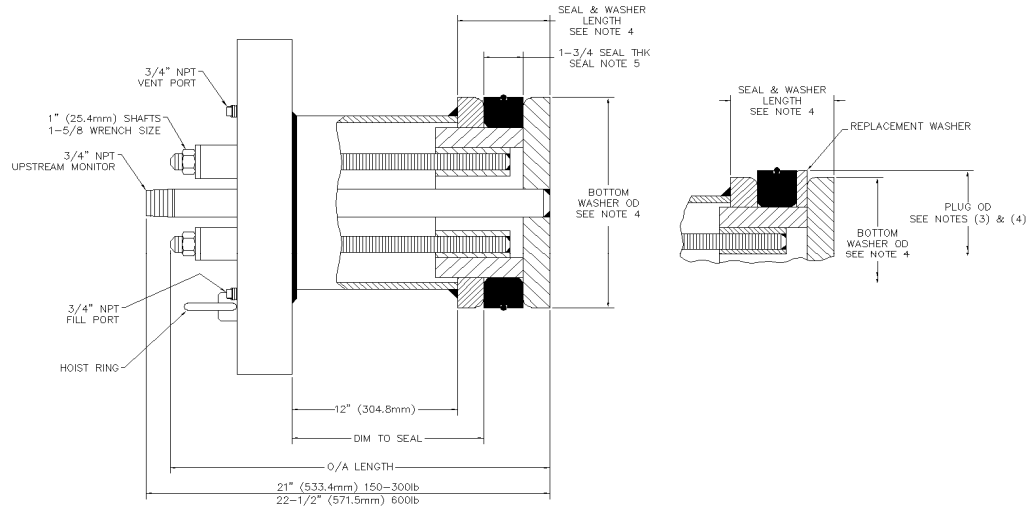
est-emea@curtisswright.com

China
 P: +86.400.636.5077
est-china@curtisswright.cn

Singapore
 P: +65.3158.5052
est-asia@curtisswright.com

© 2020 Curtiss-Wright

HIGH LIFT FLANGE TP/WP (18"-24") TECHNICAL SPECIFICATIONS



FLANGE SIZE	ANSI FLANGE CLASS (2)	PIPE SCHEDULE	PART NUMBER	BOTTOM WASHER OD (4)		PLUG OD (3) (4)		SHAFT QTY	DIM TO SEAL		150 - 300lb O/A LENGTH		600 lb O/A LENGTH		SEAL/WASHER LENGTH		ESTIMATED SHIPPING WEIGHT 150 LB		ESTIMATED SHIPPING WEIGHT 300 LB		ESTIMATED SHIPPING WEIGHT 600 LB	
				(in)	(mm)	(in)	(mm)		(in)	(mm)	(in)	(mm)	(in)	(mm)	(in)	(mm)	(lbs)	(kg)	(lbs)	(kg)	(lbs)	(kg)
18" DN450	150 - 60	sch 120 (4)	HLZ-18P120	14.75	374.7	14.75	374.7	8	12 1/2	317.5	21 3/16	538.2	22 3/8	568.3	4	101.6	497	225.2	656	297.2	890	403.3
		sch 100	HLZ-18P100			15.19	385.8								4 5/8	117.5						
		sch 80	HLZ-18P80			15.62	396.7								4 5/8	117.5						
		sch 60	HLZ-18P60			16.00	406.4								4 5/8	117.5						
		sch 40	HLZ-18P40			16.38	416.1								4 5/8	117.5						
		xs	HLZ-18PXs			16.50	419.1								4 5/8	117.5						
		sch 30	HLZ-18P30			16.62	422.1								4 5/8	117.5						
		std	HLZ-18PSTD			16.75	425.5								4 5/8	117.5						
		sch 20	HLZ-18P20			16.88	428.8								4 5/8	117.5						
		sch 10/10s/s	HLZ-18P10			17.12	434.8								4 5/8	117.5						
		20" DN500	150 - 600			sch 100 (4)	HLZ-20P100								16.94	430.3						
sch 80	HLZ-20P80			17.44	443.0	4 3/8	111.1															
sch 60	HLZ-20P60			17.88	454.2	4 3/8	111.1															
sch 40	HLZ-20P40			18.31	465.1	4 3/8	111.1															
sch 30/xs	HLZ-20PXs			18.50	469.9	4 3/8	111.1															
sch 20/std	HLZ-20PSTD			18.75	476.3	4 3/8	111.1															
sch 10/10s/5	HLZ-20P10			19.06	484.1	4 3/8	111.1															
sch 120 (4)	HLZ-24P120			19.88	505.0	4	101.6															
sch 100	HLZ-24P100			20.44	519.2	4 3/4	120.7															
sch 80	HLZ-24P80			21.06	534.9	4 3/4	120.7															
24" DN600	150 - 600			sch 60	HLZ-24P60	19.88	505.0	21.56	547.6	12	12 3/4	323.9	20 15/16	531.81			22 1/8	561.98	4 3/4	120.7	932	422.3
		sch 40	HLZ-24P40	22.12	561.8			4 3/4	120.7													
		sch 30	HLZ-24P30	22.38	568.5			4 3/4	120.7													
		xs	HLZ-24PXs	22.50	571.5			4 3/4	120.7													
		sch 20/std	HLZ-24PSTD	22.75	577.9			4 3/4	120.7													
		sch 10/5	HLZ-24P10	23.06	585.7			4 3/4	120.7													

- Notes:
- (1) Standard Seal Material = Urethane
 - (2) Standard Operating Pressure:
10"-24" = Z = A = 150lb = 450 psi
10"-24" = Z = B = 300lb = 1125 psi
10"-12" = Z = D = 600lb = 2250 psi
14"-24" = Z = D = 600lb = 1125 psi
 - (3) Seal to pipe clearance is approximately 1/2", clearance may be slightly smaller on plugs that accommodate more than one schedule size.
 - (4) Replacement washers are required on all schedule sizes except for the smallest one for each pipe size
 - (5) 10" & 12" Seals include an external o-ring

Questions? Contact EST Group Customer Service at any of the following locations.



EST Group

www.cw-estgroup.com

North, Central & South America
EST Group Corporate Office
 2701 Township Line Road
 Hatfield, PA 19440-1770 USA
 P: +1.215.721.1100
 +1.800.355.7044
 F: +1.215.721.1101

est-info@curtisswright.com

Europe / Middle East / Africa
EST Group B.V.
 Hoorn 312a
 2404 HL Alphen aan den Rijn
 The Netherlands
 P: +31.172.418841
 F: +31.172.418849

est-emea@curtisswright.com

China
 P: +86.400.636.5077
est-china@curtisswright.cn

Singapore
 P: +65.3158.5052
est-asia@curtisswright.com

© 2020 Curtiss-Wright