



# **XP-hf Plural Component Sprayers**

For the Highest Demand  
Protective Coating Applications



PROVEN QUALITY. LEADING TECHNOLOGY.

# ▶ Total Solution for High Output Applications

The XP-hf system combines the popular XP™ Sprayers with the powerful XL™ 10000 air motor. Combining these two technologies, **you get more flow** - getting jobs done faster and with less wear and tear.

## What an XP-hf Sprayer can do for you:



### Increase Productivity & Labor Savings

With 60% more flow than the existing\* XP Sprayers and the ability to use larger tips or run more than one gun off one system you can get jobs done faster.

*\*Running at same cycle rate.*



### Save Time

Pre-wired packages with heaters and junction box means less hassle and faster set up time.



### Easier to Service

The Xtreme® metering pumps with quick knock-down makes it easy to service; built in fluid filter and spring loaded lower ball checks for crisp changeover. The mechanically operated sprayer makes it easier to understand.



### Improve Spray Pattern

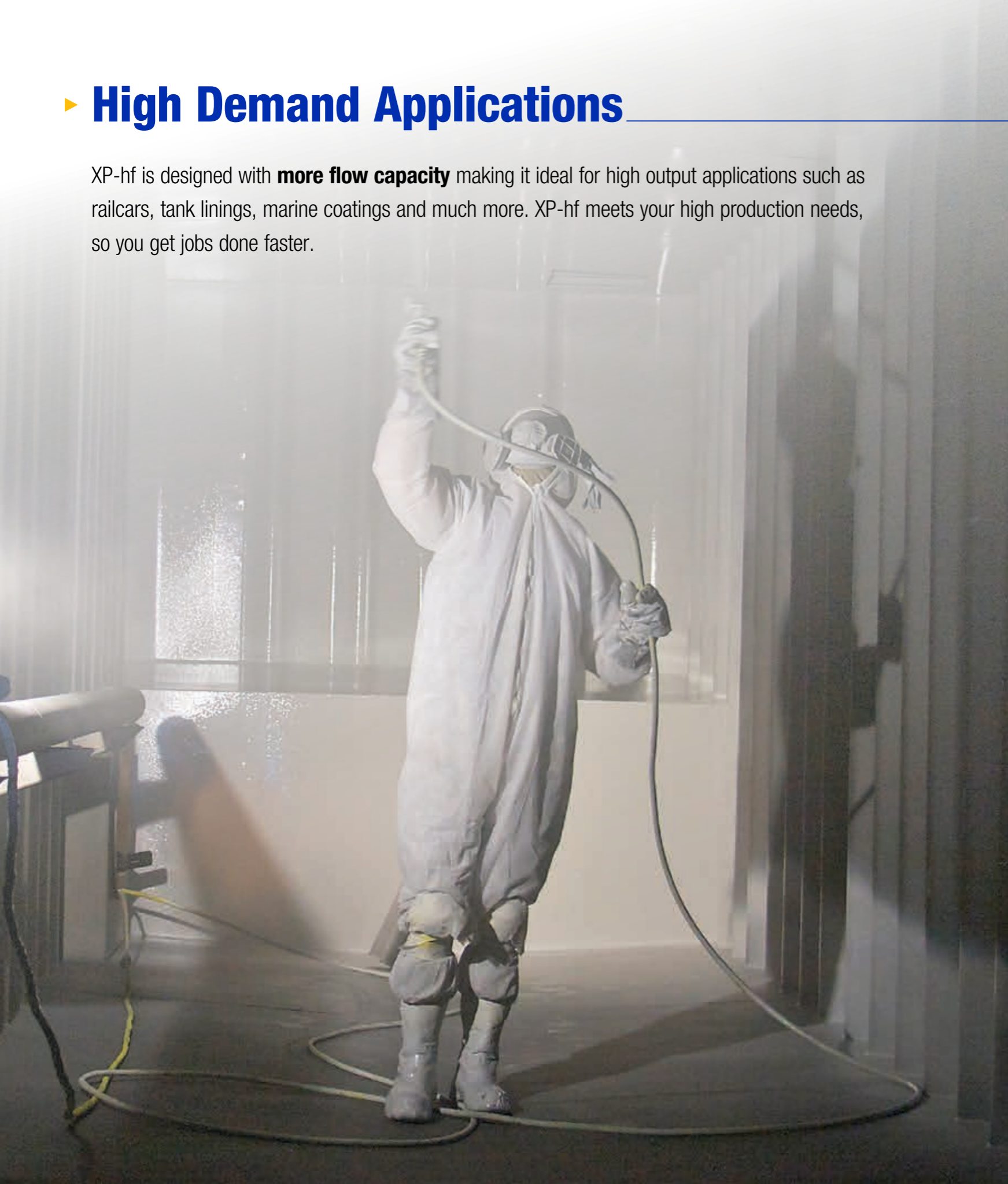
Viscon® HF Fluid Heaters improves spray pattern and film thickness control. Viscon HF heaters (5400 W) are 3x less restrictive than Viscon HP with removable, cleanable aluminum core – making it ideal for high demand applications.





## ► High Demand Applications

XP-hf is designed with **more flow capacity** making it ideal for high output applications such as railcars, tank linings, marine coatings and much more. XP-hf meets your high production needs, so you get jobs done faster.



RAILCARS



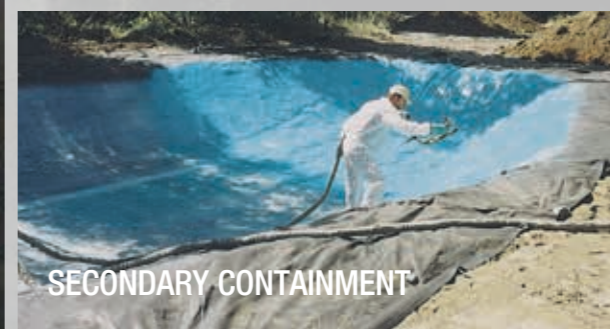
TANK LININGS



WATER TOWERS



MARINE



SECONDARY CONTAINMENT

## ► Graco Has You Covered

**Flexible options** for mix ratio, pressure and flow rate – choose the right system for the application.

If you occasionally change materials, the Graco XP-hf Sprayer is the right choice. That's because you can change the ratio by simply changing out one or two pump lowers.



Available in two models:

	XP50-hf	XP70-hf
<b>Typical Materials</b>	Medium to high solids coatings	High to 100% solids coatings
<b>Max Fluid Pressure</b> <i>(ratio dependant)</i>	4750 - 5000 psi	7100 - 7250 psi
<b>Flow Rate at 40 cpm</b> <i>(approximate)</i>	4 gallons / minute	3 gallons / minute
<b>Available Standard Mix Ratios</b>	1:1 1.5:1 2:1 2.5:1 3:1 4:1	1:1 1.5:1 2:1 2.5:1 3:1 4:1



## ▶ **The Largest, Most Powerful Air Motor Graco Has Ever Built** \_\_\_\_\_

Unmatched icing performance, more power, easier troubleshooting and fewer parts –  
XL 10000 air motor technology with 10000 cc displacement – **Graco's largest air motor.**

- **Exposed Poppets -**  
Easy access for service and troubleshooting.
- **De-Ice Bleed Air Control -**  
Maintains performance during heavy icing conditions.
- **Manual Shuttle Override Button -**  
Allows manual changeover of air motor if main valve experiences ice buildup.
- **Simplified Valve Design -**  
Fewer components for easier serviceability and little to no pulsation or pattern fluctuation, even with multiple guns. Quiet operation, even compared to smaller motors.
- **External Pilot Lines -**  
Isolate lines from cold valve body.  
Eliminates non-restartable icing stalls.



# ▶ Graco XP-hf Powered by XL 10000 Air Motor

## Junction Box (Non-hazardous)

- Pre-wired junction box for 5 heat zones means less hassle and faster set up time

## Merkur® Solvent Flush Pump

- Quickly flushes mixed materials from hose and gun

## Viscon® HF Primary Heaters

- Provides consistent spray temperature, resulting in consistent spray pattern and better thickness control
- 5400 W

## Viscon® HP Heater and Heated Hose Circulation Kit

- Maintains heated hose material temperature  
(Heated hose sold separately)

## Ratio Control – PressureTrak™

- Detects off-ratio conditions and automatically shuts down the sprayer

## XL 10000 Air Motor

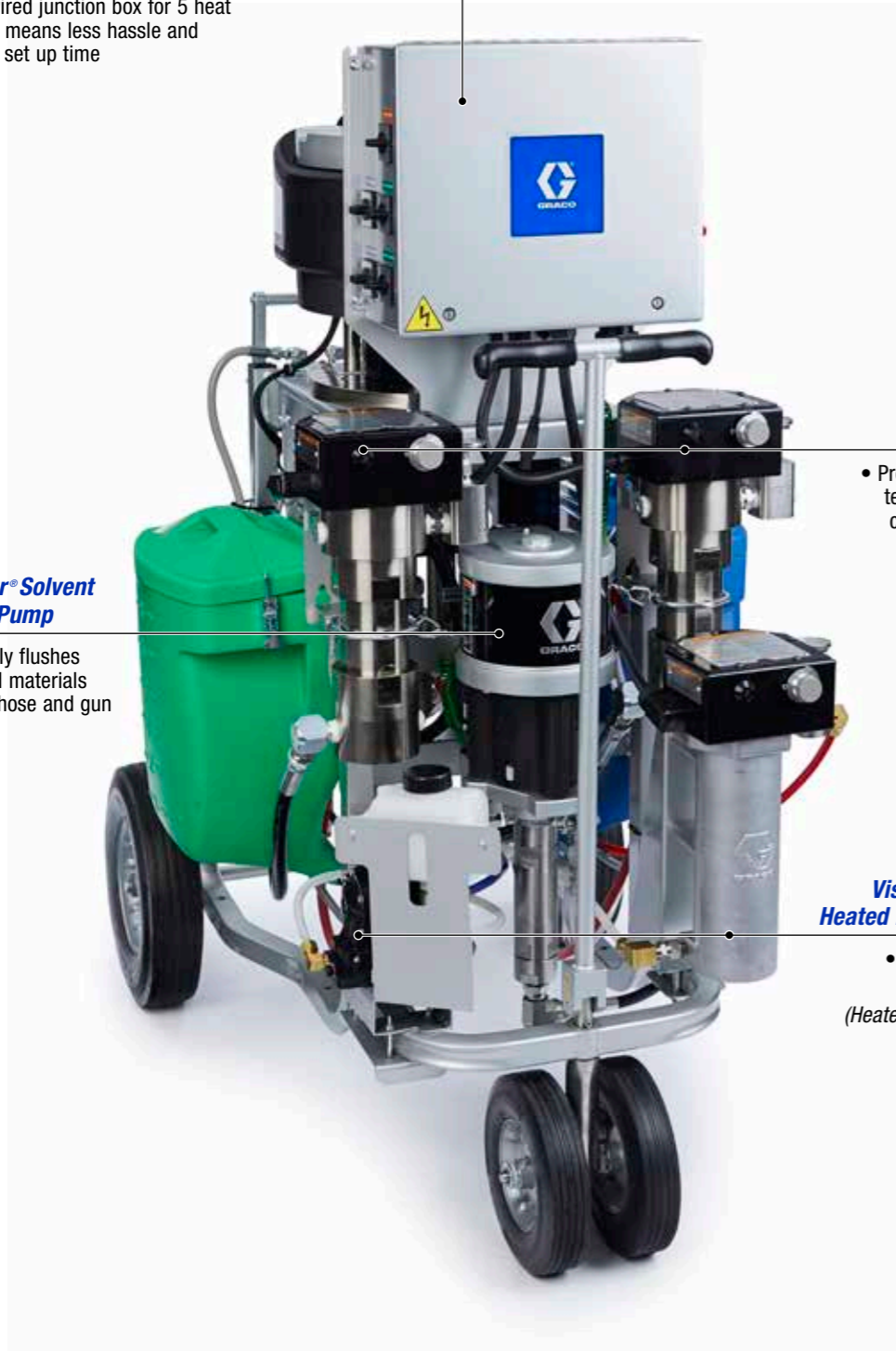
- The high output, high efficiency 10000 cc lets you use multiple guns with almost no perceivable pulsation

## Material Hoppers

- 7 gal (26 l) hoppers hold A and B components until it's time to spray
- Optimized for direct pump feed

## 3-Wheeled Cart

- Portable cart with tow handle fits through a standard 36 in doorway



# ► Ordering Information

**70:1**

Packages include: XTR702 spray gun, 35 ft hose, 7250 psi circulation manifold and standard mix manifold.

	CART	7 GALLON HOPPERS	SOLVENT PUMP	VISCON HF - HAZ LOC HEATERS (2)	VISCON HF - NON HAZ LOC HEATERS (2)	NON HAZ LOC JUNCTION BOX	VISCON HP - HAZ LOC HEATER (Hose)	VISCON HP - NON HAZ LOC HEATER (Hose)	HEATED HOSE CIRC KIT	PRESSURE TRAK	A/B LOWER SIZES (cc)
(1:1 MIX RATIO)	572000	•									-/-
	572100										145/145
	572101	•									145/145
	572102	•	•								145/145
	572103	•		•	•						145/145
	572104	•	•	•	•						145/145
	572105	•	•	•		•	•				145/145
	572106	•	•	•	•			•	•	•	145/145
	572107	•	•	•		•	•		•	•	145/145
(1.5:1 MIX RATIO)	572150										145/97
	572151	•									145/97
	572152	•	•								145/97
	572153	•		•	•						145/97
	572154	•	•	•	•						145/97
	572155	•	•	•		•	•				145/97
	572156	•	•	•	•			•	•	•	145/97
	572157	•	•	•		•	•		•	•	145/97
(2:1 MIX RATIO)	572200										180/90
	572201	•									180/90
	572202	•	•								180/90
	572203	•		•	•						180/90
	572204	•	•	•	•						180/90
	572205	•	•	•		•	•				180/90
	572206	•	•	•	•			•	•	•	180/90
	572207	•	•	•		•	•		•	•	180/90

See manual #3A4381 for complete ordering information.

See brochure #340657 for additional accessories.

# ► Ordering Information

**70:1**

Packages include: XTR702 spray gun, 35 ft hose, 7250 psi circulation manifold and standard mix manifold.

	CART	7 GALLON HOPPERS	SOLVENT PUMP	VISCON HF - HAZ LOC HEATERS (2)	VISCON HF - NON HAZ LOC HEATERS (2)	NON HAZ LOC JUNCTION BOX	VISCON HP - HAZ LOC HEATER (Hose)	VISCON HP - NON HAZ LOC HEATER (Hose)	HEATED HOSE CIRC KIT	PRESSURE TRAK	A/B LOWER SIZES (cc)
(2.5:1 MIX RATIO)	572250										180/72
	572251	•									180/72
	572252	•	•								180/72
	572253	•		•	•						180/72
	572254	•	•	•	•						180/72
	572255	•	•	•		•	•				180/72
	572256	•	•	•	•			•	•	•	180/72
	572257	•	•	•		•	•		•	•	180/72
(3:1 MIX RATIO)	572300										220/72
	572301	•									220/72
	572302	•	•								220/72
	572303	•		•	•						220/72
	572304	•	•	•	•						220/72
	572305	•	•	•		•	•				220/72
	572306	•	•	•	•			•	•	•	220/72
	572307	•	•	•		•	•		•	•	220/72
(4:1 MIX RATIO)	572400										220/54
	572401	•									220/54
	572402	•	•								220/54
	572403	•		•	•						220/54
	572404	•	•	•	•						220/54
	572405	•	•	•		•	•				220/54
	572406	•	•	•	•			•	•	•	220/54
	572407	•	•	•		•	•		•	•	220/54

See manual #3A4381 for complete ordering information.

See brochure #340657 for additional accessories.



# ► Ordering Information

**50:1**

Packages include: XTR502 spray gun, 35 ft hose, 5000 psi circulation manifold and standard mix manifold.

	CART	7 GALLON HOPPERS	SOLVENT PUMP	VISCON HF - HAZ LOC HEATERS (2)	VISCON HF - NON HAZ LOC HEATERS (2)	NON HAZ LOC JUNCTION BOX	VISCON HP - HAZ LOC HEATER (Hose)	VISCON HP - NON HAZ LOC HEATER (Hose)	HEATED HOSE CIRC KIT	PRESSURE TRAK	A/B LOWER SIZES (cc)
(1:1 MIX RATIO)	573000	•									-/-
	573100										220/220
	573101	•									220/220
	573102	•	•								220/220
	573103	•		•	•						220/220
	573104	•	•	•	•						220/220
	573105	•	•	•		•	•				220/220
	573106	•	•	•	•		•		•	•	220/220
	573107	•	•	•		•	•		•	•	220/220
(1.5:1 MIX RATIO)	573150										220/145
	573151	•									220/145
	573152	•	•								220/145
	573153	•		•	•						220/145
	573154	•	•	•	•						220/145
	573155	•	•	•		•	•				220/145
	573156	•	•	•	•		•		•	•	220/145
	573157	•	•	•		•	•		•	•	220/145
	(2:1 MIX RATIO)	573200									
573201		•									290/145
573202		•	•								290/145
573203		•		•	•						290/145
573204		•	•	•	•						290/145
573205		•	•	•		•	•				290/145
573206		•	•	•	•		•		•	•	290/145
573207		•	•	•		•	•		•	•	290/145

See manual #3A4381 for complete ordering information.

See brochure #340657 for additional accessories.

# ► Ordering Information

**50:1**

Packages include: XTR502 spray gun, 35 ft hose, 5000 psi circulation manifold and standard mix manifold.

	CART	7 GALLON HOPPERS	SOLVENT PUMP	VISCON HF - HAZ LOC HEATERS (2)	VISCON HF - NON HAZ LOC HEATERS (2)	NON HAZ LOC JUNCTION BOX	VISCON HP - HAZ LOC HEATER (Hose)	VISCON HP - NON HAZ LOC HEATER (Hose)	HEATED HOSE CIRC KIT	PRESSURE TRAK	A/B LOWER SIZES (cc)
(2.5:1 MIX RATIO)	573250										290/115
	573251	•									290/115
	573252	•	•								290/115
	573253	•		•	•						290/115
	573254	•	•	•	•						290/115
	573255	•	•	•		•	•				290/115
	573256	•	•	•	•			•	•	•	290/115
	573257	•	•	•		•	•		•	•	290/115
(3:1 MIX RATIO)	573300										290/97
	573301	•									290/97
	573302	•	•								290/97
	573303	•		•	•						290/97
	573304	•	•	•	•						290/97
	573305	•	•	•		•	•				290/97
	573306	•	•	•	•			•	•	•	290/97
	573307	•	•	•		•	•		•	•	290/97
(4:1 MIX RATIO)	573400										290/72
	573401	•									290/72
	573402	•	•								290/72
	573403	•		•	•						290/72
	573404	•	•	•	•						290/72
	573405	•	•	•		•	•				290/72
	573406	•	•	•	•			•	•	•	290/72
	573407	•	•	•		•	•		•	•	290/72

See manual #3A4381 for complete ordering information.

See brochure #340657 for additional accessories.

## AMERICAS

### MINNESOTA

Worldwide Headquarters  
Graco Inc.  
88-11th Avenue N.E.  
Minneapolis, MN 55413

### MAILING ADDRESS

P.O. Box 1441  
Minneapolis, MN 55440-1441  
Tel: 612-623-6000 Fax: 612-623-6777

## EUROPE

### BELGIUM

Graco Distribution BVBA  
Industrieterrein - Oude Bunders  
Slakweidestraat 31  
B-3630 Maasmechelen,  
Belgium  
Tel: 32 89 770 700 Fax: 32 89 770 777

## ASIA PACIFIC

### AUSTRALIA

Graco Australia Pty Ltd.  
Suite 17, 2 Enterprise Drive  
Bundoora, Victoria 3083  
Australia  
Tel: 61 3 9468 8500 Fax: 61 3 9468 8599

### CHINA

Graco Hong Kong Ltd.  
Shanghai Representative Office  
Building 7  
1029 Zhongshan Road South,  
Huangpu District  
Shanghai, 200011  
The People's Republic of China  
Tel: 86 21 649 50088 Fax: 86 21 649 50077

### INDIA

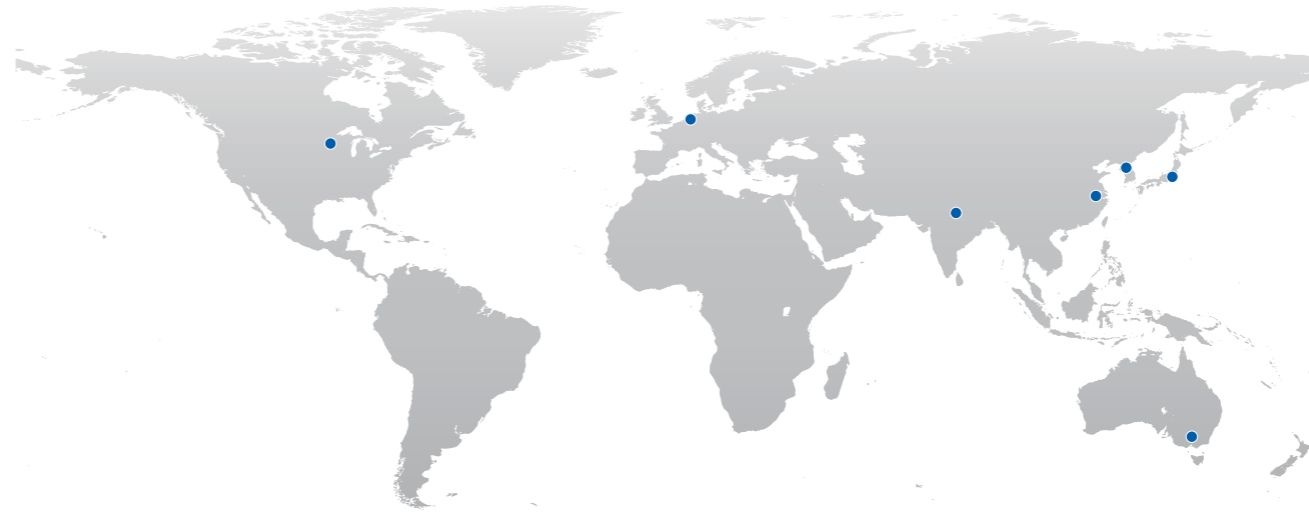
Graco India Private Limited  
4th Floor  
Augusta Point  
Sector 53, Golf Course Road  
Gurgaon, Haryana, India 122001  
Tel: 91 124 435 4208 Fax: 91 124 435 4001

### JAPAN

Graco K.K.  
1-27-12 Hayabuchi  
Tsuzuki-ku  
Yokohama City, Japan 2240025  
Tel: 81 45 593 7300 Fax: 81 45 593 7301

### KOREA

Graco Korea Inc.  
Shinhan Bank Building  
4th Floor #1599  
Gwanyang-Dong, Dongan-Ku,  
Anyang-si, Korea 431-060  
Tel: 82 31 476 9400 Fax: 82 31 476 9801



# Graco Has You Covered

Facilities Worldwide for Global Support



## Quality First

At Graco we pride ourselves on providing best-in-class products. Engineered solutions are manufactured in our own facilities, with the highest standards in the industry. We provide you with world-class customer support and expertise to help solve your application challenges.



## Global Reach

Graco has facilities across the globe to provide you with the products and service you need, where you live. Plus, Graco has dedicated field experts in all areas of the world to support the products we sell.



## Product Capabilities

Graco has a broad range of products that are engineered and tested to perform in the harshest environments so you can be certain your equipment is protected and working at peak performance.

► **Contact us today!** Call 866-361-5959 to talk with a Graco representative, or visit [www.graco.com](http://www.graco.com) for more information.