

GENUINE GRACO PARTS AND ACCESSORIES

Grease Jockey Lubrisystem Repair Kit

Part No: 563762



406676D
EN



Important Safety Instructions

Read all instructions in this manual.

Ref.	Description	Qty.
1	SCREW, 3/8" x 3/4"	6
2	WASHER, flat, 3/8"	6
3	O-RING, fluoroelastomer A, 70 DURO, 1/16"	1
4	O-RING, fluoroelastomer A, 70 DURO, 1/8"	1
5	GASKET, pump	1
6	SPRING, check valve	1
7	SPRING, return, piston	1
8	PISTON, lube	1
9	DIAPHRAGM	1
10	COVER, chamber	1
14	BODY, pump	*
15	FITTING, coupling 3/8" x 1/4"	*
16	PISTON, check valve	*

* For reference only. Not included in kit.

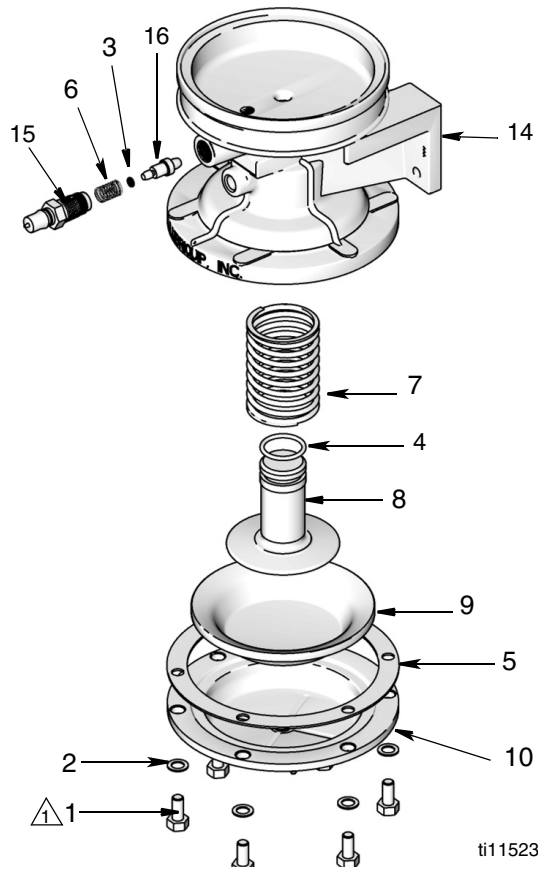
Apply Loctite® to screws (1). Torque to 15-22 ft.-lbs.

Loctite® is a registered trademark of the Loctite Corporation.

Graco Inc. P.O. Box 1441 Minneapolis, MN 55440-1441

406676 Rev, C 10/2010 - Original instructions.

Copyright 2008, Graco Inc. is registered to I.S. EN ISO 9001



REPAIR INSTRUCTIONS

1. Remove fill stud fitting (15) from pump body.
2. Remove check valve spring (6) and check valve piston (16). Replace o-ring (3) and reinstall check valve piston.
3. Install new check valve spring (6).
4. Apply pipe dope to fitting (15) and reinstall.
5. Remove screws (1) and washers (2). Remove air chamber cover (10) from pump body (14).
6. Remove pump gasket (5) and diaphragm (9).
7. Remove lube piston (8) and piston return spring (7) taking care not to scratch lube piston or bore of pump body (14).
8. Install new piston return spring (7).
9. Lubricate lube piston o-ring (4) on new piston (8) with grease.
10. Replace lube piston (8), again taking care not to scratch lube piston or bore of pump body (14).
11. Replace diaphragm (9) and gasket (5).
12. Reinstall air chamber cover (10). Apply Loctite[®] to screws (1). Replace washers (2) and screws (1). Torque cover screws (1) to 15-22 ft. lbs. (20 - 30 N.m).